



## Vehicle Report | October 2019 – April 2020



## Summary

Since October 2019 this vehicle has been a huge help in all areas of Milgis work. The vehicle is still in very good condition and has been serviced appropriately. Since the last report, the vehicle has done 8231km's over difficult terrain. It has been fantastic in delivering the essential services required.

## Core Operations

### Town trips

The vehicle has is averaging 6 trips to suppliers/ month to collect goods and repair machinery, pumps and infrastructure.

### Re-Supply

Due to the remoteness of the Milgis, we rely on this vehicle to bring all essential supplies from Nanyuki and Nairobi. The vehicle is re-supplying the base with fuel, consumables, food supplies, machinery and equipment. These trips are 1-2 times/ month. These trips also tie into project operations and service delivery that is required all over our 6000 square kilometres of covered area.



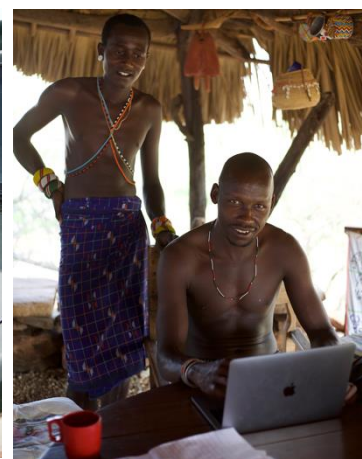


## Conservation Operations

### Monitoring and Data collection

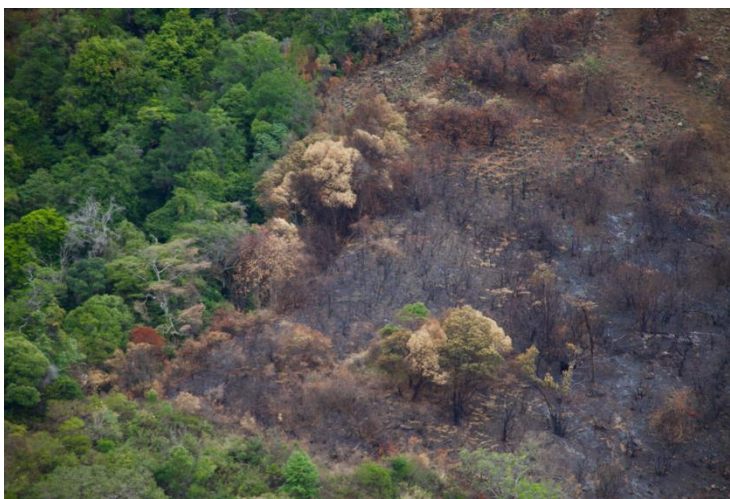
Although our scouts carry out a large amount of work on foot, they still require mobilization of supplies and equipment to wherever they are based in the field. They also carry out vehicle patrols in more remote areas such as the kaisut desert, Mt Nyiro and Mt kulal. Last week they went out into the desert tracing ostrich poachers in a place hard to access by foot. They were able to collect valuable information which will hopefully lead to the apprehension of the suspects in the future.

Covering a large area, we require a huge amount of data collection in order to reflect our work accurately. This data is used in our wildlife records and administration, the vehicle has a good HF radio which conveys information to base and also acts as a remote base station. We collect data twice a day from all of our scouts. Furthermore, the vehicle has helped us to deploy camera traps which help us understand what wildlife is in each community.



### Emergency response

Fires, floods and dangerous living conditions means that there are a lot more emergencies than the usual working environment. The vehicle has helped us deploy people when there has been fires, sadly we have not always got there on time, but it has certainly improved the response time. Additionally with the rains being a lot heavier than usual, all the river beds have been flooding and this has led to many vehicles getting stuck. The land cruiser has rescued several vehicles since January.





## Wildlife

Any reports of poaching or human-wildlife conflict require immediate action. The vehicle is on standby to collect scouts and visit incident sites to aid with arrest, tusk recovery and mobilization of personnel. We also help government conservation personnel to assist us in cases where arrests are required. Without the vehicle, many of these responses would be several days too late. We have conducted five wildlife casualty visits since October, and one trip led to the discovery of six elephants that died due to untreated gun-shot wounds

We also carry out a variety of wildlife veterinary responses with this vehicle. Some of these are responding to naturally wounded animals, others are treating animals wounded through poaching and human wildlife conflict. Fortunately due to our new 'elephant well program' we have not had to use the car to collect baby elephants that have fallen in wells.



## Forests

When dealing with incidents found in the thick forested mountains, we usually must mobilize more scouts than required on open ground. This is because it is harder to catch illegal loggers in dense cover, and more eyes on the ground lead to successful operations. Also a fast response is valuable to ensuring the situation is dealt with, therefore we have been using the vehicle to follow up on illegal sandalwood and cedar harvesting, and also illegally lit fires. We have been able to rush in backup from units that are not based in the mountains. The ever-increasing pressure on the forests is going to need more efficient responses going forwards, thus highlighting the value of the vehicle on this field of work.





## Water Projects

### Procurement and Site delivery

As with most other projects the vehicle has been essential in the removal, transportation and testing of large pieces of water project equipment. As well as collecting new machines, piping and solar panels from Nairobi and delivering them to the site

### Maintenance

The vehicle has transported Lazaro Letipo and his water projects team to the various project sites. Two of the bigger jobs that it has helped with recently are:

#### Mpagas Water Project:

Mpagas had a complete pump breakdown and required the vehicles use to help pull the pump out of the deep well. We have built a pully system that attaches to the car in order to remove hundreds of kilo's of piping and machinery from deep boreholes. This would usually take between 8-10 people to remove, and can now be done with only a couple of people.

#### Ndonyo Nasipa Water Project

The project at Ndonyo Nasipa required a refurbishment. This was a big job as it required new wiring as well as a repaired pump system. There were also some structural changes that were made to improve the panels. The vehicle helped get all the materials to the nearest river crossing, and after that everything had to be carried by hand. Because the river was in flood.





## Dam Building and Land restoration

As you can see below, there are huge swathes of Northern Kenya that have become extremely degraded due to mismanagement and overgrazing. At the Milgis trust we are doing our best to combat these issues by developing erosion gullies into rehabilitated land. We are fortunate to own a JCB tractor which does the majority of this work. This project requires vehicle support on a regular basis. The outcome is that communities who usually rely on seasonal river beds for water, can now get clean drinking water from a simple pan dam.



## Maintenance and site mobilization

Due to the dry and dusty environment, our JCB is high maintenance compared with other parts of the world. We have to service this machine after every 250 hours of operation. Service materials must be acquired from Nairobi, transported to the Milgis and then a service carried out. We usually tie this service in with a resupply of fuel, rations and water. This means that we are carrying out a service every 4 months, and resupplying every three weeks. Without the support from the land cruiser, the dam unit would be under supplied and underserved. Vehicle support for this team is hugely appreciated.





## Veterinary Unit

### Summary

Rabies and other diseases have been prolific in remote areas without any veterinary services. The past 6 years the vet team have done their best to ensure that the majority of the dogs are frequented which rabies vaccine, noromectin (ivermectin) and chemspay (on a smaller scale). We have used vehicles to carry inoculations to even the most remote of communities and have been providing annual follow ups for these trips. Today, Rabies occasionally rears its head, but we are for the most part in a really good place. The Samburu are trusting their dogs a lot more, and less predators are making successful night break-ins, resulting in less predator persecution.



### Motor mobile Innoculation

Since October last year, we have carried out 3 mobile veterinary clinics. Each clinic covered approximately 400 km's and vaccinated 500 dogs. Thanks to the vehicle, we were able to reach even the most remote communities where the dogs have never been vaccinated before. What's more, we were able to use the vehicle to transport heavy coolboxes of ice, used to keep the vaccines cool in this hot climate – thus increasing our range from base. In total we have vaccinated 1500 dogs in the past 4 months, and aim to vaccinated another 1500 before the end of the year.





## Emergency Medical

With very little access to Healthcare in the area, people who suffer from chronic conditions or have an emergencies often approach us for help. Most of the time these issues could have been prevented with simple treatment or minor surgery. Due to the remoteness of this place, cases remain untreated until the person is in a critical condition and calls out to the Milgis. With all of the people that we help, those who are able to pay towards their medical bills with their livestock will sell them and pay us. We will only allocate funds when the person truly cannot contribute. The vehicle is absolutely crucial in getting people to the help they need.



### Matine Lentooko

Mr Lentooko has been persistent in seeking help for his daughter, Matine. She initially was brought to us with malaria, and the doctor discovered that she had a goiter too. (inset left is how she looked when we first met her). Since her initial visit, she has been brought for treatment many times! And her last visit in February was very successful ( above). She lives in a very remote area and has relied entirely on this vehicle for transportation to the hospital (7 hours)





In the previous report, there was a lady called Namae Lewongu who had a cyst on her shoulder, which has caused her no more trouble. Sadly she then brought her son to us, who has colon cancer. We were able to collect some alternative medicine for him which has helped him hugely. We have two students studying herbal medicine who were able to source some medicine which really works.



Najarin has been brought to Nanyuki on several occasions for major surgery. She has a deformed bladder, which has required several complicated operations. Her latest surgery in early march has stabilized her condition and we hope to see her improve to the point she no longer needs any surgeries.



Douglas Lenamarle, who lives in a nearby location to Najarin, has also got bladder complications. He has been brought to Nyeri several times to receive specialized treatments. Several operations down the line, he can now lead a normal life. His last visit completed the required treatment (fingers crossed)





Ntimaran Lbalanga

This Lady had a thyroid issue, and was looking forward to having a surgical procedure to help her situation. We brought her to Nanyuki. Having seen the doctor, it was established that because she had a very young baby she was not in a position to undergo surgery. And so she had to be taken home. However we are monitoring her situation and will bring her back when she is ready.



This lady from the Lobuk family a goitre. She came to us initially in a panic about her condition. However we established that her problem could be treated in Nanyuki. And so she was driven 300km to Nanyuki to receive treatment. SO far she is responding well and we anticipate that she will improve over the next few months. She is now back at home leading a relatively normal life.



This Mzee Ltaro Mituni from South Horr area, was featured in the last report. Having being burned very badly due to an epileptic fit, he recovered well and was able to go back to his home. His family were extremely grateful and will now be a lot more careful of him being around fires. He was in hospital for several weeks recovering from severe burns. Without the help of the vehicle we would not have been able to get him to the hospital. Many thanks to MEAK and Nargis Kasmani for securing the treatment that he needed.



Below from Left: Lkiliwan Lenadisiolo, Nasra Gurteyo (child), Ntabauwa Lolbelish.

Lkiliwan and Wahareya both came to us with heart problems and we had arranged for them to attend a clinic that was happening in MP shah hospital. Unfortunately Lkiliwan was not able to get help because the heart clinic was for children. Nasra was meant to be operated on, but the surgeons suspected pulmonary tuberculosis, and so she was given some medication until a potentially later operation date.

Ntabauwa Lolbelish was operated on in Nanyuki – she had an abscess in her groin which was removed. She is now back at home leading a relatively normal life.

All of these patients were collected, brought to Nanyuki and taken home by the vehicle.

